



# TEST REPORT

**Applicant:** shenzhen Targetever Technology Co.,LTD  
**Address:** Floor 11-12, Building 8, LianHua Industrial Park, LongYuan Road, LongHua New District, ShenZhen

**The following sample(s) was/were submitted and identified on behalf of the client as:**

**Product name:** PC/PS3 Wired Game Controller  
**Model:** EG-CS3059, EG-C1060T, EG-C1061T, EG-CS3061, EG-C1069T, EG-CS3069, EG-CS3070, EG-C1059T, EG-C1054T, EG-C1053, EG-C1054C1, EG-CS3005, EG-C1005C1, EG-C1017T, EG-C1017, EG-CS3053, EG-C1020, EG-C1001, EG-C1021, EG-C1070T, EG-C1006

**Sample Received Date:** Jul. 28, 2015  
**Testing Period:** Jul. 28, 2015~Aug. 03, 2015

**Test Requirement:**

As specified by client, to screen Lead(Pb), Cadmium(Cd), Mercury(Hg), Chromium(Cr) and Bromine(Br) in the submitted sample(s) by XRF. When screening results exceed the XRF screening limit in IEC62321-3-1: 2013, further use of chemical methods are required to test the Lead(Pb), Cadmium(Cd), Mercury(Hg), Hexavalent Chromium(Cr(VI)), Polybrominated Biphenyls(PBBs) and Polybrominated Diphenyl Ethers(PBDEs) in the submitted samples in accordance with Regulation 2011/65/EU.

**Conclusion:**

Pass

**Test Result(s):** Please refer to the following page(s);

**Test Method:** Please refer to the following page(s);

*Frank*  
 Tested by \_\_\_\_\_

*Sally*  
 Reviewed by: \_\_\_\_\_

*Maurice Liao*  
 Approved by: \_\_\_\_\_

Date: 2015-08-04



**Shenzhen NTEK Testing Technology Co., Ltd.**

Address: 1/F, Building E, Fenda Science Park, Sanwei Community, Xixiang Street, Bao'an District, Shenzhen P.R. China.  
 Tel: (86)-0755-61156588 Fax: (86)-0755-61156599 Http: www.ntek.org.cn

**Test Result(s):**

## 1. Shell

Sample No.	Sample Description	Tested Items	XRF Screening Test	Chemical Test (mg/kg)	Conclusion
1	Black plastic shell	Pb	BL	/	PASS
		Cd	BL	/	
		Hg	BL	/	
		Cr(Cr(VI) )	BL	/	
		Br(PBBs&PBDEs)	BL	/	
2	Transparent plastic sheet of black plastic shell	Pb	BL	/	PASS
		Cd	BL	/	
		Hg	BL	/	
		Cr(Cr(VI) )	BL	/	
		Br(PBBs&PBDEs)	BL	/	
3	Silvery metal spring of black plastic shell	Pb	BL	/	PASS
		Cd	BL	/	
		Hg	BL	/	
		Cr(Cr(VI) )	BL	/	
		Br(PBBs&PBDEs)	/	/	
4	Black metal screw	Pb	BL	/	PASS
		Cd	BL	/	
		Hg	BL	/	
		Cr(Cr(VI) )	IN	Negative	
		Br(PBBs&PBDEs)	/	/	
5	Green coating	Pb	BL	/	PASS
		Cd	BL	/	
		Hg	BL	/	
		Cr(Cr(VI) )	BL	/	
		Br(PBBs&PBDEs)	BL	/	
6	Red coating	Pb	BL	/	PASS
		Cd	BL	/	
		Hg	BL	/	
		Cr(Cr(VI) )	BL	/	
		Br(PBBs&PBDEs)	BL	/	
7	White coating	Pb	BL	/	PASS
		Cd	BL	/	
		Hg	BL	/	
		Cr(Cr(VI) )	BL	/	
		Br(PBBs&PBDEs)	BL	/	

**Shenzhen NTEK Testing Technology Co., Ltd.**

 Address: 1/F, Building E, Fenda Science Park, Sanwei Community, Xixiang Street, Bao'an District, Shenzhen P.R. China.  
 Tel: (86)-0755-61156588 Fax: (86)-0755-61156599 Http: www.ntek.org.cn



8	Blue coating	Pb	BL	/	PASS
		Cd	BL	/	
		Hg	BL	/	
		Cr(Cr(VI) )	BL	/	
		Br(PBBs&PBDEs)	BL	/	
9	Pink coating	Pb	BL	/	PASS
		Cd	BL	/	
		Hg	BL	/	
		Cr(Cr(VI) )	BL	/	
		Br(PBBs&PBDEs)	BL	/	
10	White rubber button	Pb	BL	/	PASS
		Cd	BL	/	
		Hg	BL	/	
		Cr(Cr(VI) )	BL	/	
		Br(PBBs&PBDEs)	BL	/	
11	Black rubber of white rubber button	Pb	BL	/	PASS
		Cd	BL	/	
		Hg	BL	/	
		Cr(Cr(VI) )	BL	/	
		Br(PBBs&PBDEs)	BL	/	
12	Black rubber button	Pb	BL	/	PASS
		Cd	BL	/	
		Hg	BL	/	
		Cr(Cr(VI) )	BL	/	
		Br(PBBs&PBDEs)	BL	/	

2. Keyboard PCB

Sample No.	Sample Description	Tested Items	XRF Screening Test	Chemical Test (mg/kg)	Conclusion
13	PCB	Pb	BL	/	PASS
		Cd	BL	/	
		Hg	BL	/	
		Cr(Cr(VI) )	BL	/	
		Br(PBBs&PBDEs)	BL	/	
14	Tin solder	Pb	BL	/	PASS
		Cd	BL	/	
		Hg	BL	/	
		Cr(Cr(VI) )	BL	/	
		Br(PBBs&PBDEs)	/	/	

**Shenzhen NTEK Testing Technology Co., Ltd.**

Address: 1/F, Building E, Fenda Science Park, Sanwei Community, Xixiang Street, Bao'an District, Shenzhen P.R. China.  
 Tel: (86)-0755-61156588 Fax: (86)-0755-61156599 Http: www.ntek.org.cn



15	White plastic wire jacket of white line row	Pb	BL	/	PASS
		Cd	BL	/	
		Hg	BL	/	
		Cr(Cr(VI) )	BL	/	
		Br(PBBs&PBDEs)	BL	/	
16	Wire core of white line row	Pb	BL	/	PASS
		Cd	BL	/	
		Hg	BL	/	
		Cr(Cr(VI) )	BL	/	
		Br(PBBs&PBDEs)	/	/	

3. Main PCB

Sample No.	Sample Description	Tested Items	XRF Screening Test	Chemical Test (mg/kg)	Conclusion
17	PCB	Pb	BL	/	PASS
		Cd	BL	/	
		Hg	BL	/	
		Cr(Cr(VI) )	BL	/	
		Br(PBBs&PBDEs)	BL	/	
18	Tin solder	Pb	BL	/	PASS
		Cd	BL	/	
		Hg	BL	/	
		Cr(Cr(VI) )	BL	/	
		Br(PBBs&PBDEs)	/	/	
19	SMD PCB	Pb	BL	/	PASS
		Cd	BL	/	
		Hg	BL	/	
		Cr(Cr(VI) )	BL	/	
		Br(PBBs&PBDEs)	BL	/	
20	LED light bead of SMD PCB	Pb	BL	/	PASS
		Cd	BL	/	
		Hg	BL	/	
		Cr(Cr(VI) )	BL	/	
		Br(PBBs&PBDEs)	BL	/	
21	SMD resistor	Pb	BL	/	PASS
		Cd	BL	/	
		Hg	BL	/	
		Cr(Cr(VI) )	BL	/	
		Br(PBBs&PBDEs)	BL	/	



22	SMD capacitor	Pb	BL	/	PASS
		Cd	BL	/	
		Hg	BL	/	
		Cr(Cr(VI) )	BL	/	
		Br(PBBs&PBDEs)	BL	/	
23	Black glue	Pb	BL	/	PASS
		Cd	BL	/	
		Hg	BL	/	
		Cr(Cr(VI) )	BL	/	
		Br(PBBs&PBDEs)	BL	/	
24	SMD audion	Pb	BL	/	PASS
		Cd	BL	/	
		Hg	BL	/	
		Cr(Cr(VI) )	BL	/	
		Br(PBBs&PBDEs)	BL	/	
25	Glass diode	Pb	BL	/	PASS
		Cd	BL	/	
		Hg	BL	/	
		Cr(Cr(VI) )	BL	/	
		Br(PBBs&PBDEs)	BL	/	
26	White plastic wire jacket of white small line row	Pb	BL	/	PASS
		Cd	BL	/	
		Hg	BL	/	
		Cr(Cr(VI) )	BL	/	
		Br(PBBs&PBDEs)	BL	/	
27	Wire core of white small line row	Pb	BL	/	PASS
		Cd	BL	/	
		Hg	BL	/	
		Cr(Cr(VI) )	BL	/	
		Br(PBBs&PBDEs)	/	/	
28	Small PCB of white small line row	Pb	BL	/	PASS
		Cd	BL	/	
		Hg	BL	/	
		Cr(Cr(VI) )	BL	/	
		Br(PBBs&PBDEs)	BL	/	
29	Transparent colloid	Pb	BL	/	PASS
		Cd	BL	/	
		Hg	BL	/	
		Cr(Cr(VI) )	BL	/	
		Br(PBBs&PBDEs)	BL	/	

**Shenzhen NTEK Testing Technology Co., Ltd.**

Address: 1/F, Building E, Fenda Science Park, Sanwei Community, Xixiang Street, Bao'an District, Shenzhen P.R. China.  
Tel: (86)-0755-61156588 Fax: (86)-0755-61156599 Http: www.ntek.org.cn

## 4. Control knob

Sample No.	Sample Description	Tested Items	XRF Screening Test	Chemical Test (mg/kg)	Conclusion
30	Black rubber sleeve	Pb	BL	/	PASS
		Cd	BL	/	
		Hg	BL	/	
		Cr(Cr(VI) )	BL	/	
		Br(PBBs&PBDEs)	BL	/	
31	Red plastic shell	Pb	BL	/	PASS
		Cd	BL	/	
		Hg	BL	/	
		Cr(Cr(VI) )	BL	/	
		Br(PBBs&PBDEs)	BL	/	
32	Silvery metal rod	Pb	BL	/	PASS
		Cd	BL	/	
		Hg	BL	/	
		Cr(Cr(VI) )	BL	/	
		Br(PBBs&PBDEs)	/	/	
33	Cupreous elastic metal	Pb	BL	/	PASS
		Cd	BL	/	
		Hg	BL	/	
		Cr(Cr(VI) )	BL	/	
		Br(PBBs&PBDEs)	/	/	
34	Silvery metal shell	Pb	BL	/	PASS
		Cd	BL	/	
		Hg	BL	/	
		Cr(Cr(VI) )	BL	/	
		Br(PBBs&PBDEs)	/	/	
35	Grey plastic frame	Pb	BL	/	PASS
		Cd	BL	/	
		Hg	BL	/	
		Cr(Cr(VI) )	BL	/	
		Br(PBBs&PBDEs)	BL	/	
36	Silvery metal shell of button	Pb	BL	/	PASS
		Cd	BL	/	
		Hg	BL	/	
		Cr(Cr(VI) )	BL	/	
		Br(PBBs&PBDEs)	/	/	

37	Black plastic button	Pb	BL	/	PASS
		Cd	BL	/	
		Hg	BL	/	
		Cr(Cr(VI) )	BL	/	
		Br(PBBs&PBDEs)	BL	/	
38	Silvery elastic metal of button	Pb	BL	/	PASS
		Cd	BL	/	
		Hg	BL	/	
		Cr(Cr(VI) )	BL	/	
		Br(PBBs&PBDEs)	/	/	
39	Yellow plastic film of button	Pb	BL	/	PASS
		Cd	BL	/	
		Hg	BL	/	
		Cr(Cr(VI) )	BL	/	
		Br(PBBs&PBDEs)	BL	/	
40	Metal pin of button	Pb	BL	/	PASS
		Cd	BL	/	
		Hg	BL	/	
		Cr(Cr(VI) )	BL	/	
		Br(PBBs&PBDEs)	/	/	
41	Black plastic of button	Pb	BL	/	PASS
		Cd	BL	/	
		Hg	BL	/	
		Cr(Cr(VI) )	BL	/	
		Br(PBBs&PBDEs)	BL	/	
42	Black plastic frame	Pb	BL	/	PASS
		Cd	BL	/	
		Hg	BL	/	
		Cr(Cr(VI) )	BL	/	
		Br(PBBs&PBDEs)	BL	/	
43	White plastic of black plastic frame	Pb	BL	/	PASS
		Cd	BL	/	
		Hg	BL	/	
		Cr(Cr(VI) )	BL	/	
		Br(PBBs&PBDEs)	BL	/	
44	PCB of black plastic frame	Pb	BL	/	PASS
		Cd	BL	/	
		Hg	BL	/	
		Cr(Cr(VI) )	BL	/	
		Br(PBBs&PBDEs)	BL	/	



45	Silvery metal of black plastic frame	Pb	BL	/	PASS
		Cd	BL	/	
		Hg	BL	/	
		Cr(Cr(VI) )	BL	/	
		Br(PBBs&PBDEs)	/	/	
46	Gray metal slider block	Pb	BL	/	PASS
		Cd	BL	/	
		Hg	BL	/	
		Cr(Cr(VI) )	BL	/	
		Br(PBBs&PBDEs)	/	/	
47	Black plastic pedestal	Pb	BL	/	PASS
		Cd	BL	/	
		Hg	BL	/	
		Cr(Cr(VI) )	BL	/	
		Br(PBBs&PBDEs)	BL	/	
48	White plastic pedestal	Pb	BL	/	PASS
		Cd	BL	/	
		Hg	BL	/	
		Cr(Cr(VI) )	BL	/	
		Br(PBBs&PBDEs)	BL	/	
49	Brown metal spring	Pb	BL	/	PASS
		Cd	BL	/	
		Hg	BL	/	
		Cr(Cr(VI) )	BL	/	
		Br(PBBs&PBDEs)	/	/	

5. Vibration motor

Sample No.	Sample Description	Tested Items	XRF Screening Test	Chemical Test (mg/kg)	Conclusion
50	Black foam	Pb	BL	/	PASS
		Cd	BL	/	
		Hg	BL	/	
		Cr(Cr(VI) )	BL	/	
		Br(PBBs&PBDEs)	BL	/	
51	Silvery metal shell	Pb	BL	/	PASS
		Cd	BL	/	
		Hg	BL	/	
		Cr(Cr(VI) )	BL	/	
		Br(PBBs&PBDEs)	/	/	

**Shenzhen NTEK Testing Technology Co., Ltd.**

Address: 1/F, Building E, Fenda Science Park, Sanwei Community, Xixiang Street, Bao'an District, Shenzhen P.R. China.  
 Tel: (86)-0755-61156588 Fax: (86)-0755-61156599 Http: www.ntek.org.cn



52	Copper coil	Pb	BL	/	PASS
		Cd	BL	/	
		Hg	BL	/	
		Cr(Cr(VI) )	BL	/	
		Br(PBBs&PBDEs)	/	/	
53	Silvery silicon steel sheet	Pb	BL	/	PASS
		Cd	BL	/	
		Hg	BL	/	
		Cr(Cr(VI) )	BL	/	
		Br(PBBs&PBDEs)	/	/	
54	Magnet	Pb	BL	/	PASS
		Cd	BL	/	
		Hg	BL	/	
		Cr(Cr(VI) )	BL	/	
		Br(PBBs&PBDEs)	/	/	
55	Pale yellow plastic	Pb	BL	/	PASS
		Cd	BL	/	
		Hg	BL	/	
		Cr(Cr(VI) )	BL	/	
		Br(PBBs&PBDEs)	BL	/	
56	White plastic sheet	Pb	BL	/	PASS
		Cd	BL	/	
		Hg	BL	/	
		Cr(Cr(VI) )	BL	/	
		Br(PBBs&PBDEs)	BL	/	
57	Red plastic ring	Pb	BL	/	PASS
		Cd	BL	/	
		Hg	BL	/	
		Cr(Cr(VI) )	BL	/	
		Br(PBBs&PBDEs)	BL	/	
58	Blue plastic wire jacket	Pb	BL	/	PASS
		Cd	BL	/	
		Hg	BL	/	
		Cr(Cr(VI) )	BL	/	
		Br(PBBs&PBDEs)	BL	/	
59	Red plastic wire jacket	Pb	BL	/	PASS
		Cd	BL	/	
		Hg	BL	/	
		Cr(Cr(VI) )	BL	/	
		Br(PBBs&PBDEs)	BL	/	



60	Wire core	Pb	BL	/	PASS
		Cd	BL	/	
		Hg	BL	/	
		Cr(Cr(VI) )	BL	/	
		Br(PBBs&PBDEs)	/	/	
61	Silvery metal fan blade	Pb	BL	/	PASS
		Cd	BL	/	
		Hg	BL	/	
		Cr(Cr(VI) )	IN	Negative	
		Br(PBBs&PBDEs)	/	/	
62	Silvery metal rod	Pb	BL	/	PASS
		Cd	BL	/	
		Hg	BL	/	
		Cr(Cr(VI) )	BL	/	
		Br(PBBs&PBDEs)	/	/	
63	Black plastic ring	Pb	BL	/	PASS
		Cd	BL	/	
		Hg	BL	/	
		Cr(Cr(VI) )	BL	/	
		Br(PBBs&PBDEs)	BL	/	
64	Golden metal pad	Pb	BL	/	PASS
		Cd	BL	/	
		Hg	BL	/	
		Cr(Cr(VI) )	BL	/	
		Br(PBBs&PBDEs)	/	/	

6. Data line

Sample No.	Sample Description	Tested Items	XRF Screening Test	Chemical Test (mg/kg)	Conclusion
65	Silvery metal shell of USB slot	Pb	BL	/	PASS
		Cd	BL	/	
		Hg	BL	/	
		Cr(Cr(VI) )	BL	/	
		Br(PBBs&PBDEs)	/	/	
66	White plastic of USB slot	Pb	BL	/	PASS
		Cd	BL	/	
		Hg	BL	/	
		Cr(Cr(VI) )	BL	/	
		Br(PBBs&PBDEs)	BL	/	

**Shenzhen NTEK Testing Technology Co., Ltd.**

Address: 1/F, Building E, Fenda Science Park, Sanwei Community, Xixiang Street, Bao'an District, Shenzhen P.R. China.  
 Tel: (86)-0755-61156588 Fax: (86)-0755-61156599 Http: www.ntek.org.cn



67	Silvery metal contact sheet of USB slot	Pb	BL	/	PASS
		Cd	BL	/	
		Hg	BL	/	
		Cr(Cr(VI) )	BL	/	
		Br(PBBs&PBDEs)	/	/	
68	Black external plastic wire jacket	Pb	BL	/	PASS
		Cd	BL	/	
		Hg	BL	/	
		Cr(Cr(VI) )	BL	/	
		Br(PBBs&PBDEs)	BL	/	
69	Black encapsulation	Pb	BL	/	PASS
		Cd	BL	/	
		Hg	BL	/	
		Cr(Cr(VI) )	BL	/	
		Br(PBBs&PBDEs)	BL	/	
70	Red plastic wire jacket(thin)	Pb	BL	/	PASS
		Cd	BL	/	
		Hg	BL	/	
		Cr(Cr(VI) )	BL	/	
		Br(PBBs&PBDEs)	BL	/	
71	White plastic wire jacket(thin)	Pb	BL	/	PASS
		Cd	BL	/	
		Hg	BL	/	
		Cr(Cr(VI) )	BL	/	
		Br(PBBs&PBDEs)	BL	/	
72	Green plastic wire jacket(thin)	Pb	BL	/	PASS
		Cd	BL	/	
		Hg	BL	/	
		Cr(Cr(VI) )	BL	/	
		Br(PBBs&PBDEs)	BL	/	
73	Black plastic wire jacket(thin)	Pb	BL	/	PASS
		Cd	BL	/	
		Hg	BL	/	
		Cr(Cr(VI) )	BL	/	
		Br(PBBs&PBDEs)	BL	/	
74	Wire core	Pb	BL	/	PASS
		Cd	BL	/	
		Hg	BL	/	
		Cr(Cr(VI) )	BL	/	
		Br(PBBs&PBDEs)	/	/	

**Shenzhen NTEK Testing Technology Co., Ltd.**

Address: 1/F, Building E, Fenda Science Park, Sanwei Community, Xixiang Street, Bao'an District, Shenzhen P.R. China.  
 Tel: (86)-0755-61156588 Fax: (86)-0755-61156599 Http: www.ntek.org.cn



- Note:
- N.D. = Not Detected (<MDL)
  - MDL = Method Detection Limit
  - mg/kg = ppm = parts per million
  - /=Not Regulated or Not Applicable
  - BL = Under the XRF screening limit
  - IN = Further chemical test will be conducted when the screening result inconclusive
  - OL = Further chemical test will be conducted while the result is above the screening limit.
  - Negative = Absence of Cr(VI) , the detected Cr(VI) concentration in the boiling water extraction solution is less than 0.02 mg/kg with 50cm<sup>2</sup> sample surface area used.
  - Positive = Presence of Cr(VI), the detected Cr(VI) concentration in the boiling water extraction solution is equal to or greater than 0.02 mg/kg with 50cm<sup>2</sup> sample surface area used.

- Remark:
- 1.The screening results are only used for reference.
  - 2.When conducting the test for PBBs&PBDEs, XRF was introduced to screen Br Exclusively; When conducting the test for Hexavalent Chromium, XRF was introduced to screen Chromium exclusively.

**Test Method:**

## 1. Screening test by XRF spectroscopy

XRF screening limits in mg/kg for regulated elements according to IEC 62321-3-1:2013

Element	Limit of IEC 62321-3-1:2013 (unit:mg/kg)		MDL	
	Polymers and metals	Composite material	Polymers	Other material
Pb	$BL \leq (700-3\sigma) < X$ $< (1300+3\sigma) \leq OL$	$BL \leq (500-3\sigma) < X$ $< (1500+3\sigma) \leq OL$	10 mg/kg	50 mg/kg
Cd	$BL \leq (70-3\sigma) < X$ $< (130+3\sigma) \leq OL$	LOD $< X < (150+3\sigma) \leq OL$	10 mg/kg	50 mg/kg
Hg	$BL \leq (700-3\sigma) < X$ $< (1300+3\sigma) \leq OL$	$BL \leq (500-3\sigma) < X$ $< (1500+3\sigma) \leq OL$	10 mg/kg	50 mg/kg
Cr	$BL \leq (700-3\sigma) < X$	$BL \leq (500-3\sigma) < X$	10 mg/kg	50 mg/kg
Br	$BL \leq (300-3\sigma) < X$	$BL \leq (250-3\sigma) < X$	10 mg/kg	50 mg/kg

Note: -BL = Under the XRF screening limit

-OL = Further chemical test will be conducted while result is above the screening limit.

-X= The symbol "X" marks the region where further investigation is necessary.

 -3 $\sigma$ = The reproducibility of analytical instruments

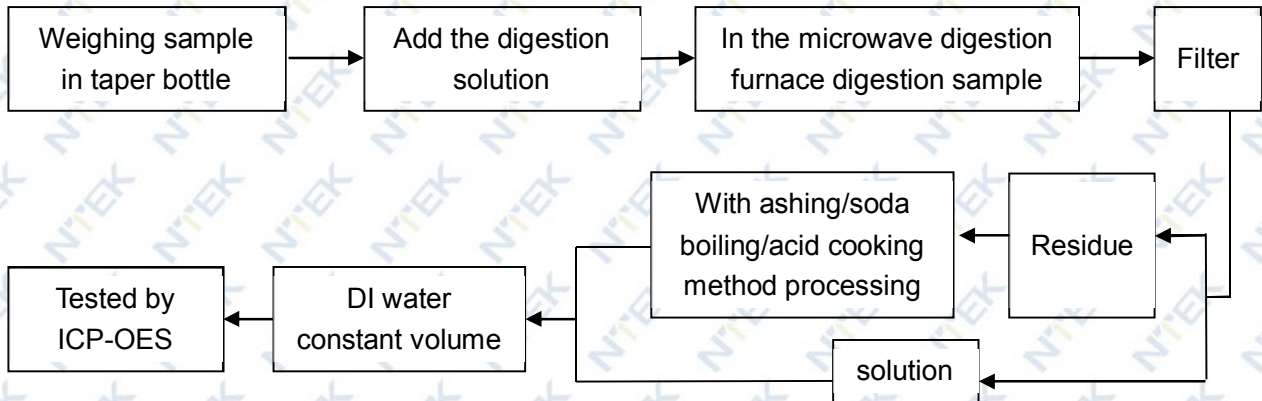
-LOD= Detection limit

## 2. Chemical Test

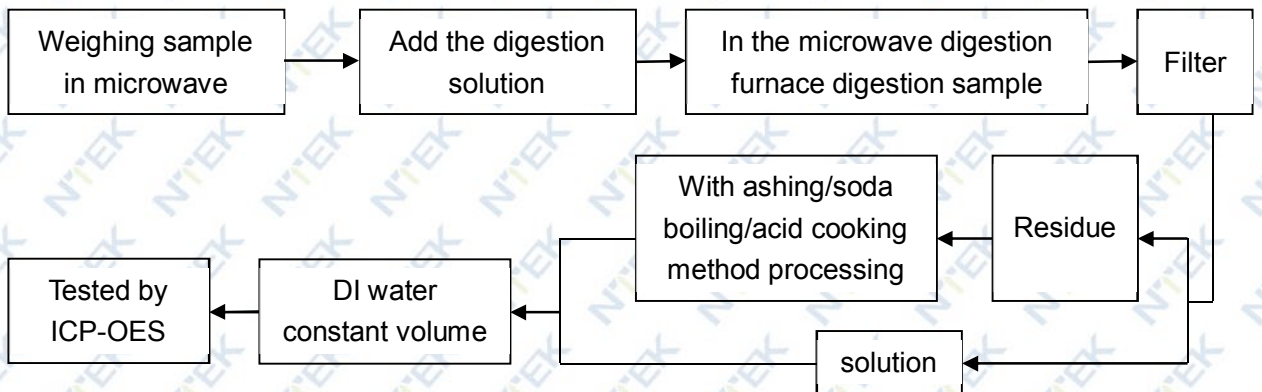
Test item	Pretreatment method	Test instrument	MDL
Lead(Pb)	IEC 62321-5:2013 Ed.1.0	ICP-OES	2 mg/kg
Cadmium(Cd)	IEC 62321-5:2013 Ed.1.0	ICP-OES	2 mg/kg
Mercury(Hg)	IEC 62321-4:2013 Ed.1.0	ICP-OES	2 mg/kg
Chromium(Cr VI)	IEC 62321:2008 Ed.1	UV-Vis	2 mg/kg
PBBs/ PBDEs	IEC 62321:2008 Ed.1 Annex A	GC-MS	5 mg/kg

**Test Flow:**

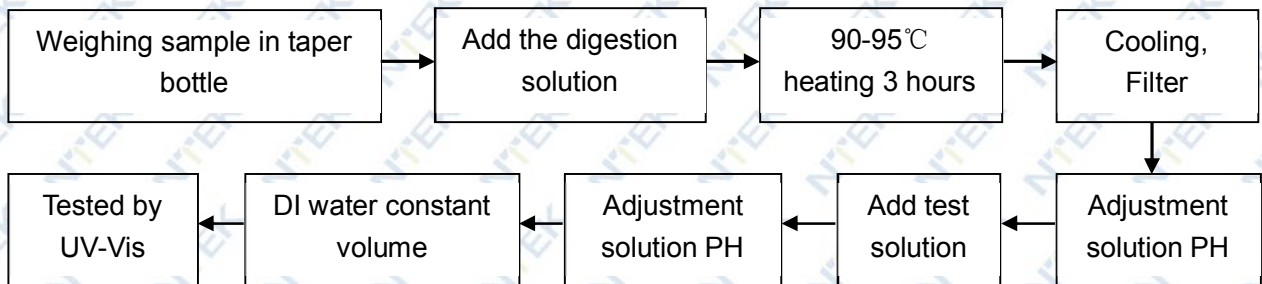
**1. Lead(Pb), Cadmium(Cd)**



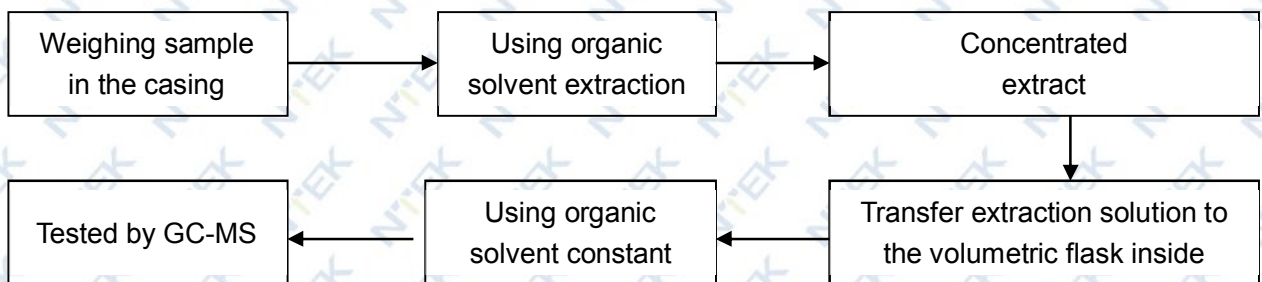
**2. Mercury (Hg)**



**3. Chromium(Cr VI)**



**4. PBBs/ PBDEs**



Sample photo(s):



Fig.1



Fig.2



Fig.3



Fig.4





Fig.5

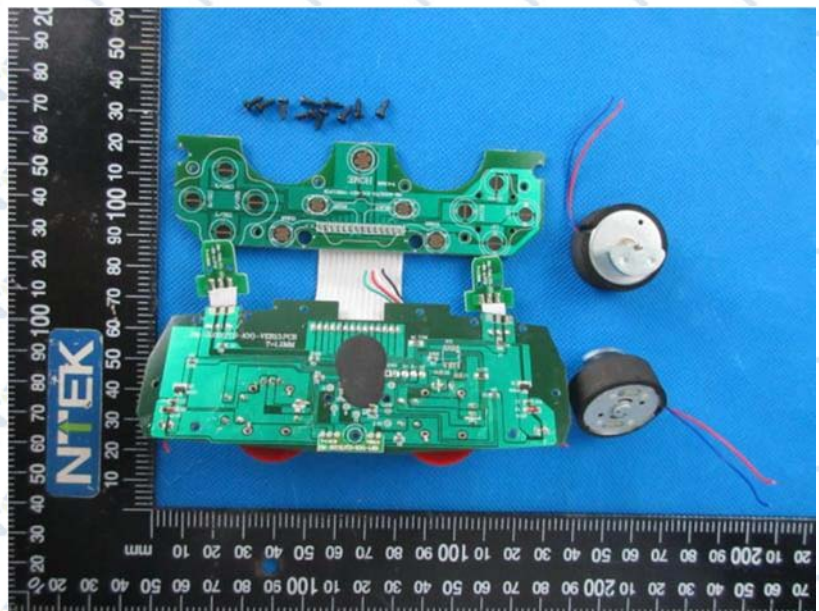


Fig.6

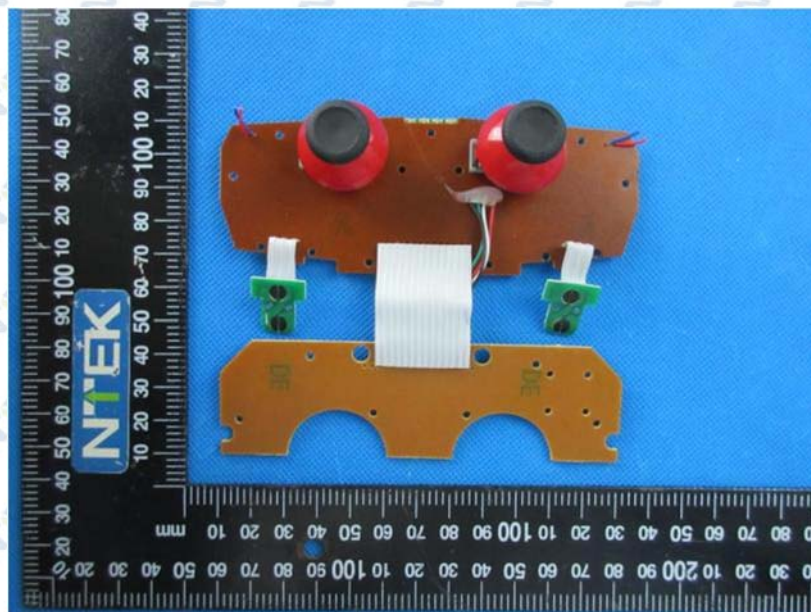


Fig.7



Fig.8

\*\*\*\*End of Report\*\*\*\*

The test report is effective only with both signature and specialized stamp, The result(s) shown in this report refer only to the sample(s) tested. Without written approval of NTEK, this report can't be reproduced except in full.